

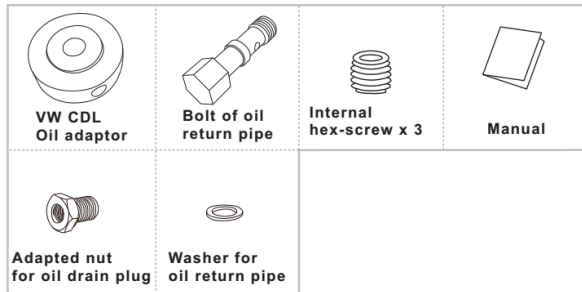
# VW R series Oil Adaptor

Alpha-Competition Ref: AC-DP-TOP-4

## Instruction Manual

### Contents

The following pictures are for reference only and as products map appear slightly different:



### Character

- Designed for VAG EA113 engine.
- No need to cut any pipe in the engine bay to keep the parts look as factory made.
- Made of Aluminum with tiny size and light-weight.
- Anodized surface can be anti-resistance.
- Easy to install by DIY

### Importance




- Please read manual completely before installation that can help you go through the installation steps easily.
- It's highly recommend to consult professionals or workshop to install if you are not familiar with the engine bay, because the installation requires professional knowledge of engine system.
- The damage or unexpected result due to incorrect installation is out of the liability of our warranty, such as reversed connection of the electrode poles, or damaged with abnormal usage. Any loss of personal or property due to incorrect usage is out of our liability of responsibility or compensation.
- MUST operate or install this product in the ventilation space, in case of injured or death accident because of carbon carbon monoxide poisoning.
- Please turn off the engine off at least 1 hour before installation to ensure safety and avoid the check light on when disassemble any parts.
- Please do not rework, disassemble or modify any part of this product to make sure the warranty is valid.
- All the procedure is in queue to ensure the correct installation and not damage the pipe and other parts.

### Notice

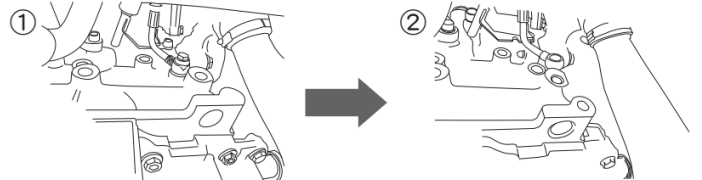
- MUST wait for at least one hour to make sure the oil is cooled enough to avoid injured by oil with high temperature explored when unload the oil filter.
- Please wear safety glove to prevent heat injured and hurt by pointed instruction.
- This product is only for VAG model with EA113 engine, it doesn't work on other engine.
- Please assemble all the pipe completely and firmly.

### Installation

#### The preparation before installation

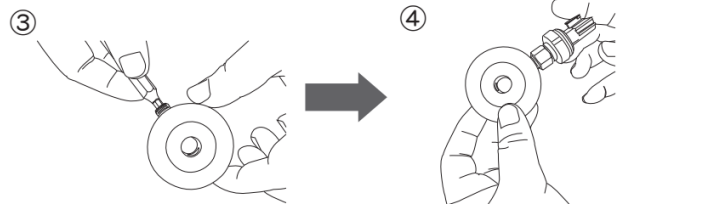
Turn Off the engine  
LOCK (OFF)  Open the engine hood  wait for at least 1 hour 

#### Start to install



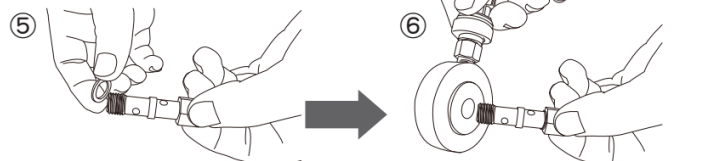
Find the nut for oil return pipe of booster.

Unscrew the nut for oil return pipe



screw the 1/8" PT nut into the VW CDL oil adaptor

Tape the thread of sensor with seal tape, then screw the sensor into the VW CDL oil adaptor.



Fit the washer into the bolt for oil return pipe.

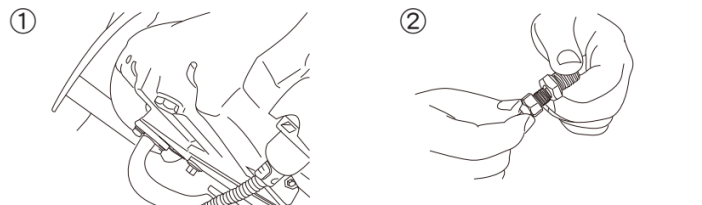
Put the bolt through the central hole of adaptor.



Screw the bolt into the oil return pipe.

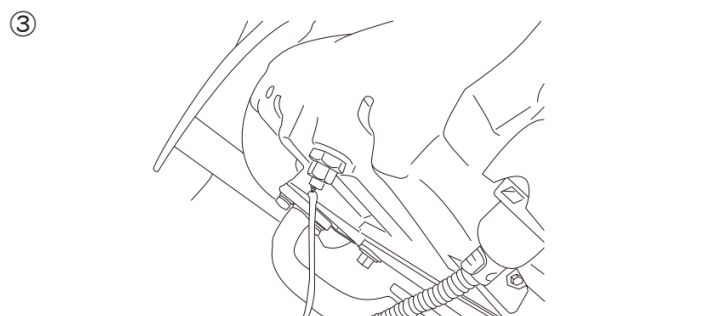
Finished.

#### Oil replacement



Unscrew the oil drain plug when replace the oil for maintenance

Fit the sensor into the oil drain plug adaptor



Screw the oil drain plug back to the oil return pipe.